

# Harness Checker Specifications



FS0005



FS0005-M

**[Purpose]**

A Harness Checker is a device used to determine the exact connection point of electrical wires when plugged into a certain type of connector. This helps ensure that the wires are connected in the correct order and minimizes the risk of errors during installation.

**[Technology]**

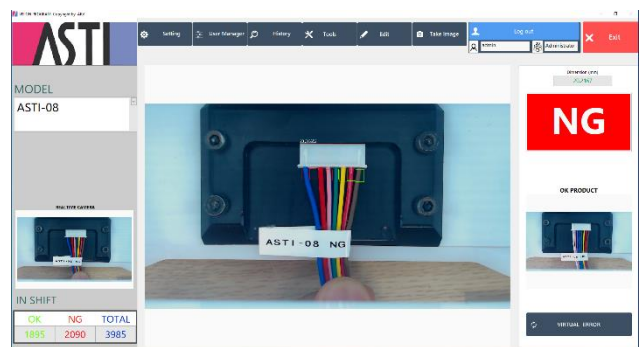
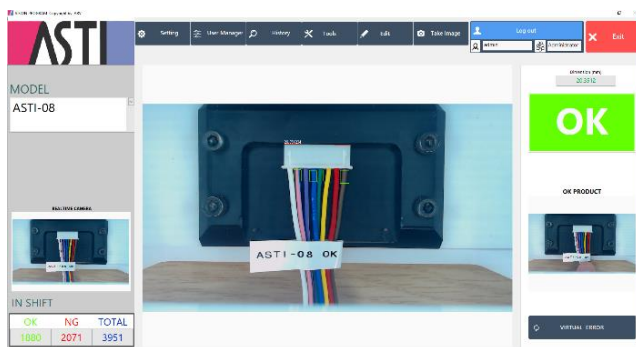
The operating principle of the harness checker is based on comparing the color captured when captured by the camera with a standard color table stored in the system to determine the exact color of the wire. This technology helps reduce confusion and increase accuracy during the inspection process.

**[Application]**

Harness Checker are often used in the electrical wire production, electronics, telecommunications, and construction industries to ensure the accuracy of connecting electrical wires. It saves time and effort compared to checking wire color with the naked eye.

**[How to use]**

A correctly manufactured harness is captured with a camera and recognized as an OK sample by specifying the area on the image that should be color inspected by mouse. The inspection area and the image data taken are tied to the part number and stored in memory. The worker only needs to specify the part number and place the harness in front of the camera to automatically perform the inspection and make a decision: OK/NG/ or wrong insertion orientation or wrong model.

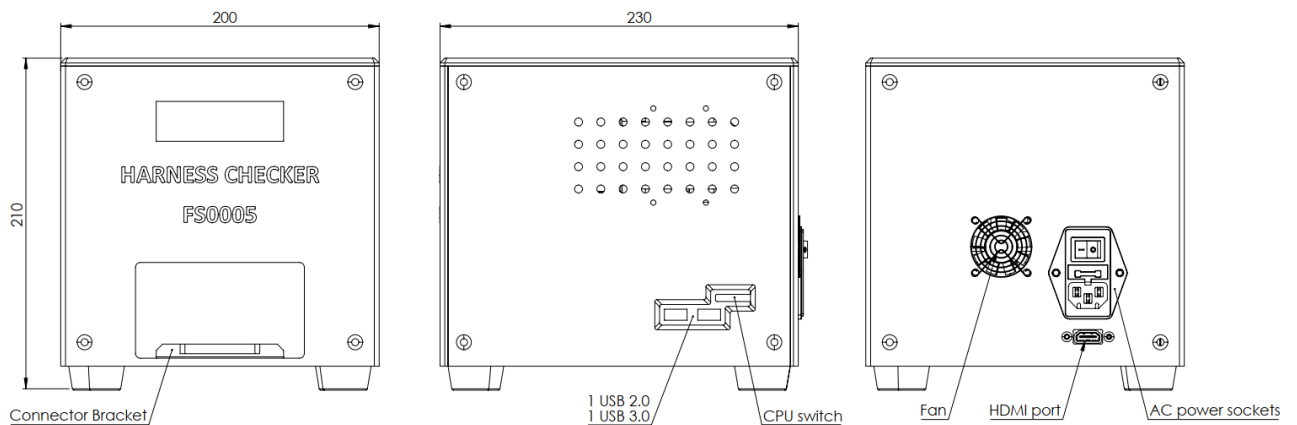


Software	Contents	Details
Test functions	Wire color check	Basic colors - GRB system ※Stripe color harness not supported ※Harnesses with more than 2 rows of connectors cannot be inspected.
	Warning	Reverse connector/wrong model
	Dimension check(Optional)	Accuracy ±0.2 mm
Quantity Management	Counting OK/NG numbers	Function of managing check history (by date, Model or Lot)
Model Setting	Programmable by user	Set the model to be inspected by mouse operation
Authentication system	Password Authentication	Prevents modification by workers

Two types can be selected according to the factory conditions.

### 1) FS0005

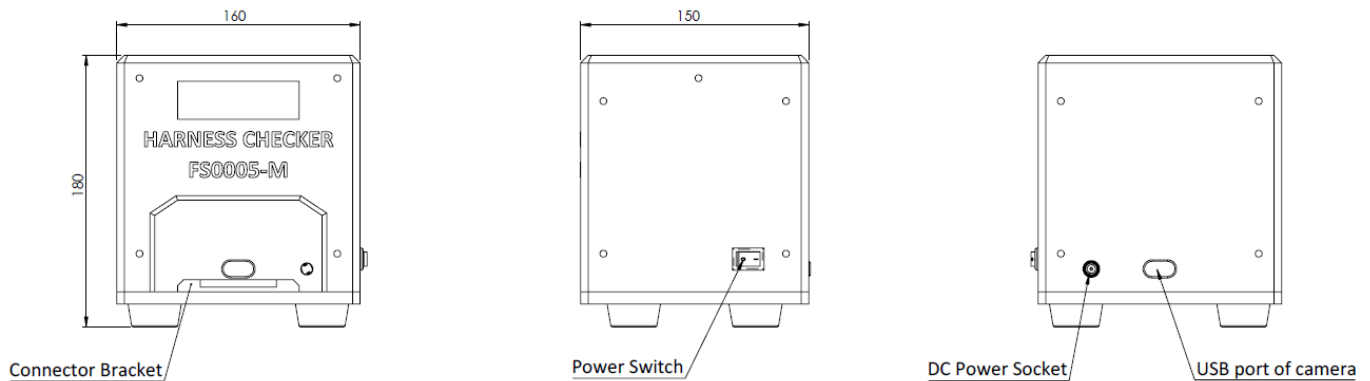
Model Name	FS0005 (with PC)	
Installed Device	Mini PC/Camera Full HD 1080p/Lighting/Speaker/AC Cable	
Device that needs to be prepared	Display/Mouse/Keyboard	
Display Requirement	Screen resolution	FHD (1920×1080px)
Control lighting	Manual (Adjustment by moving the trimmer inside the device)	
Power supply	AC 100-240V, 50-60Hz	
Dimension (mm)	200 x 230 x 210 (WDH)	



## 2) FS0005-M

<b>Model Name</b>	FS0005-M (without PC)	
<b>Installed Device</b>	Camera Full HD 1080p/Lighting/AC Adaptor	
<b>Device that needs to be prepared</b>	PC/Display/Mouse/Keyboard/Speaker ( If sound is needed) USB Cable (USB port on the device side is Type B)	
<b>PC Requirement</b>	Operating system	Windows 10/11
	USB ports	USB 2.0 ports×1
<b>Display Requirement</b>	Screen resolution	FHD (1920×1080px)
<b>Control lighting</b>	Manual (Adjustment by moving the trimmer inside the device)	
<b>Power supply</b>	AC 100-240V, 50-60Hz (DC 12V Adaptor)	
<b>Dimension (mm)</b>	160 x 150 x 180(WDH)	

※We provide an installer for the inspection software. User must install the software yourself.



**ASTI Research and Development Vietnam Corporation**  
 Phone: +84(0)236 3555 059 Email: [asti.rd.vietnam@gmail.com](mailto:asti.rd.vietnam@gmail.com)  
 24 Hai Ho, Thanh Binh, Hai Chau District, Da Nang City, Viet Nam